



# GLYPHS

The Monthly Newsletter of the  
Arizona Archaeological and Historical Society  
An Affiliate of the Arizona State Museum, University of Arizona  
Founded in 1916



Vol. 61, No. 01

Tucson, Arizona

July 2011

## HIGHLIGHTS OF THIS ISSUE

President's Message .....	2
<i>Preserving the Past for Future Generations: Accomplishments of the Pima County Historic Preservation Bond Program</i> , by Linda Mayo and Roger Anyon .....	4
The Cornerstone .....	5

Simon Herbert




*Pima County Historic Preservation Bonds. Canoa Ranch: Rehabilitated blacksmith shop, tack room, and salt storage building.*

---

Next General Meeting: July 19, 2010  
<[www.az-arch-and-hist.org](http://www.az-arch-and-hist.org)>

## PRESIDENT'S MESSAGE

 The Arizona Archaeological and Historical Society board, at their June meeting passed the budget for fiscal year 2010–2011 for a total of \$55,700, with estimated membership revenue set at \$28,400, or 51 percent of the budget!

The next largest percentage, 22 percent, or \$12,383, represents approximately 4 percent of the Haury, Scholarship and Research, and Orrell Estate endowments.

The remainder of the revenue comes from royalty payments from Altimira, which publishes *KIVA*,

*KIVA* sales, the ASM book sale, and miscellaneous sales at meetings and at Pecos. The income from the ASM book sale goes toward the purchase of books for the ASM library.

Without membership revenue and annual income from the Haury, Scholarship and Research, and Orrell Estate endowments, AAHS could not continue to operate.

For those of you who have not renewed your membership for the coming year, I urge you to do so now. Your continued support is vital to the ongoing programs of AAHS.

—Don Burgess, President

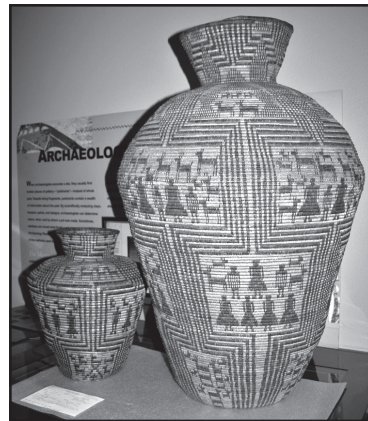
## UPCOMING AAHS FIELD TRIPS

*AAHS membership is required to participate in field trips. Prospective members may attend one AAHS field trip prior to joining.*

**September 24, 2010**

### A Taste of the ASM Basket Collection

Ethnography curators Diane Dittmore and Andrew Higgins will share baskets from the extensive Arizona State Museum collection. Since the museum presently does not have display space for these items, this is a rare chance to view some of these objects. Materials and technology of this craft will be a focus of the talk. The tour will be held in the Pottery Gallery area and does not involve walking. To register, contact Katherine Cerino at <kcerino@gmail.com>.



We are posting photographs of previous field trips on the website <az-arch-and-hist.org>. Check them out under the Field Trip tab.

## AAHS LECTURE SERIES

All meetings are held at the University Medical Center, Duval Auditorium Third Monday of the month, 7:30–9:00 p.m.

- July 19, 2010: Roger Anyon and Linda Mayro, *Preserving the Past for the Benefit of Future Generations: Accomplishments of the Pima County Historic Preservation Bond Program*
- August 2010: No Lecture (2010 Pecos Conference)
- Sept. 20, 2010: Raymond H. Thompson, *Title to be Announced*
- Oct. 18, 2010: Matt Pailes, *Cerros de Trincheras in the Hohokam World: A Case Study of the Cerro Prieto Site*
- Nov. 15, 2010: Henry Wallace, *New Clues, New Research, and New Photos of the Oldest Art in Western North America*
- Dec. 20, 2010: T. J. Ferguson, *Two Views on Zuni Migration: Traditional History and Archaeology*

## 2010 PECOS CONFERENCE

The 2010 Pecos Conference will be held August 12–15, in Silverton, Colorado. The Pecos Conference is a conference of archaeologists held annually in the southwestern United States or northwestern Mexico.

Each August, archaeologists gather under open skies. They set up a large tent for shade, and spend three or more days together discussing recent research and the problems of the field and challenges of the profession. In recent years, Native Americans, avocational archaeologists, the general public, and media organizations have come to speak with the archaeologists. These individuals and groups play an increasingly important role, as participants and as audience, helping professional archaeologists celebrate archaeological research and to mark cultural continuity.

First inspired and organized by A. V. Kidder in 1927, the Pecos Conference has no formal organization or permanent leadership. Somehow, professional archaeologists find ways to organize themselves to meet at a new conference location each summer, mostly because they understand the problems of working in isolation in the field and the importance of direct face time with colleagues. The conference is open to all who are interested.

For more information, including registration information, camping and lodging guides, times, and so forth, visit <www.swanet.org/2010\_pecos\_conference/index.html>.

## AAHS HAPPENINGS

### TOPIC OF THE JULY 19 GENERAL MEETING

#### *Preserving the Past for Future Generations: Accomplishments of the Pima County Historic*

#### *Preservation Bond Program*

*by Linda Mayro and Roger Anyon*

In 1997 and again in 2004, at the ballot box, the voters of Pima County resoundingly voiced their support of County Bonds for historic preservation. Many members of the Arizona Archaeological and Historical Society actively supported the historic preservation bond program. Now that the 1997 bond projects are complete, and the 2004 bond projects are close to completion, it is only fitting that we provide the results of the County historic preservation bond projects to the Society.

The total bond program was a little over \$29 million. Using these funds, we leveraged an additional \$4.8 million in grants that brought the total available funding to about \$33.8 million. The bond projects fall into three major categories: the rehabilitation and adaptive use of historic structures, the purchase of major archaeo-

logical sites for conservation, and the development of the Juan Bautista de Anza National Historic Trail.

Rehabilitation of historic structures includes such diverse properties at the Agua Caliente Ranch, Ajo Curley School and Depot, Binghampton, Canoa Ranch, Colossal Cave Visitor Center, Dunbar School, Empirita Ranch, Performing Arts Center, Robles Ranch, San Pedro Chapel, an Steam Pump Ranch.

Archaeological site acquisitions include Coyote Mountains, Dakota Wash, Fort Lowell, Honey Bee Village, Los Morteros, Pantano Townsite, Mission Gardens, Tumamoc Hill, and Valencia site.

A master plan is now in place for the Anza Trail, trail heads and portions of the trail have been constructed, and a local auto route has been marked with signage.

*Speaker Linda Mayro is manager of the Pima County Office of Cultural Resources and Historic Preservation that is responsible for implementation of the County's Historic Preservation Bond Program, as well as cultural resources management services and review for historic preservation compliance for Pima County departments and the private sector. Linda researched the cultural resources and ranch conservation portions of the County's "Sonoran Desert Conservation Plan," and previously worked in the private sector and for the Arizona State Museum. Linda recently concluded nine years as Arizona Advisor to the National Trust for Historic Preservation.*

*Speaker Roger Anyon is Program Manager at the Pima County Office of Cultural Resources and Historic Preservation. Previously, he worked at Zuni Pueblo for 11 years as tribal archaeologist, served for 14 years on the Smithsonian Institution Native American Repatriation Review Committee, and has worked on archaeological projects in England, Italy, and the United States. Roger has published on repatriation, cultural landscapes, and the archaeology of the Mogollon Mimbres region.*

## THE CORNERSTONE

### Creek Culture Study to Analyze Impacts on Environments

The Apalachicola Ecosystems Project (AEP), with support from the National Science Foundation and with a team of researchers including Arizona State Museum's Dr. Barnet Pavao-Zuckerman, will explore the dynamic relationship between humans and their physical and social environments in the Creek town of Apalachicola (1715-1836) in eastern Alabama.

This project will characterize how humans adapt to and, simultaneously, affect their biophysical and social environments over time. Apalachicola is a unique case at which the emigrant and immigrant sites within a single town are well-documented. It is one of the most politically important Creek towns and was, according to legend, the site of the origin of the Creek Confederacy.

Sections of two archaeological sites will be excavated—Apalachicola town (1757-1836) and Apalachicola Old town (1715-1757)—to measure cultural resilience throughout the eighteenth and early nineteenth centuries. The project will

couple the archaeological investigations with historical research. Researchers will measure local changes in the biophysical environment through analysis of pollen cores, markers of climate variation, and human-induced changes in the plant and animal communities. In addition, historical records will be used to elucidate broader political climates, alliances, and conflicts.

The objectives of AEP are to: (1) investigate how Native Americans maintained social, economic, and ecological viability in the face of substantial and rapid change to the social and biophysical environments; (2) identify to human-caused effects of Creek economic strategies on plant and animal communities; and (3) better understand Native American social, economic, and ecological resilience during the Historic period.

The work of the Apalachicola Ecosystems Project will be relevant to descendant communities, forest managers, policy makers, environ-

*(continued on page 6)*

mental historians, anthropologists, culture historians, and ecologists. "AEP will further understanding of how humans have used culture to adapt to and modify their physical environment in this understudied region," said Dr. Pavao Zuckerman. "The broader impacts are significant to a wide range of fields in addition to descendant communities. The study of anthropogenic effects on the

environment is one of the most important issues facing us today."

Results and conclusions of this project will be shared when ready.

*The Cornerstone is presented by:*  
Darlene F. Lizarraga, Marketing Coordinator  
Arizona State Museum, University of Arizona  
P.O. Box 210026, Tucson, AZ 85721-0026  
Phone: 520.626.8381, FAX: 520.621.2976  
<www.statemuseum.arizona.edu>  
<df@email.arizona.edu>

## UPCOMING ARIZONA STATE MUSEUM EVENTS

### Archaeology Summer Camp for Adults: Bone Lab July 26-30, 2010

Enjoy indoor, summer archaeology! Museum scholars are your teachers; an air-conditioned laboratory is your setting. Experience how and what archaeologists learn about Arizona's ancient cultures. ASM osteoarchaeologists team up to offer you a week-long course on human and animal bone identification. Human bone of a non-archaeological nature will be used in this classroom setting. There is no fieldwork included. See <www.statemuseum.arizona.edu/public/archcamp/index.shtml> for fees and schedule.

### 18th Annual Southwest Indian Art Fair February 19-20, 2011

Mark your calendars now for southern Arizona's Premier Indian Art Show and Market! Arizona State Museum's signature event returns home in 2011 – back on the museum's front lawn! Meet 200 Southwest Native artists, many of them award winning. Talk with them about their work and learn about the cultural significance that informs, inspires, and imbues their work. Top-quality, handmade art includes pottery, Hopi katsina dolls, paintings, jewelry, baskets, rugs, blankets, and much more. Artist demonstrations, Native food, music, and dance performances round out the two-day celebration.

**ARTICLE SUBMISSIONS FOR GLYPHS:** If you have research or a field project that would be interesting to *Glyphs* readers, please consider contributing an article. Requirements are a maximum of 1,000 words, or 750 words and one illustration, or 500 words and two illustrations. Please send electronic submissions to <jadams@desert.com>, or by mail to Jenny Adams, Desert Archaeology, Inc., 3975 N. Tucson Blvd., Tucson, Arizona 85716.

## AAHS MEMBERSHIP/SUBSCRIPTION APPLICATION

(A membership subscription makes a great gift for your loved ones!)

All members receive discounts on Society workshops and classes. Monthly meetings are held the third Monday of each month except August, and are free and open to the public. Participation in field trips requires membership.

### Categories of Membership

- \$50 **Kiva** members receive 4 issues of *Kiva*, 12 issues of *Glyphs*, and all current benefits
- \$40 **Glyphs** members receive *Glyphs*
- \$35 **Student Kiva** members receive both *Glyphs* and *Kiva*
- \$75 **Contributors** receive *Glyphs*, *Kiva*, and all current benefits
- \$120 **Supporters** receive *Glyphs*, *Kiva*, and all current benefits
- \$300 **Sponsors** receive *Glyphs*, *Kiva*, and all current benefits
- \$1,000 **Lifetime** members receive *Glyphs*, *Kiva*, and all current benefits

For memberships outside the U.S., please add \$20.00.

For institutional membership, contact AltaMira Press at <www.altamirapress.com> or 800.273.2223.

My Name: \_\_\_\_\_ Phone: \_\_\_\_\_

Address: \_\_\_\_\_

City: \_\_\_\_\_ State: \_\_\_\_\_ Zip: \_\_\_\_\_

E-mail: \_\_\_\_\_

Gift Subscription To: \_\_\_\_\_ Phone: \_\_\_\_\_

Address: \_\_\_\_\_

City: \_\_\_\_\_ State: \_\_\_\_\_ Zip: \_\_\_\_\_

E-mail: \_\_\_\_\_

AAHS does not release membership information to other organizations

### MEMBERSHIP AND SUBSCRIPTION INFORMATION

Memberships and subscriptions run for one year beginning on July 1 and ending June 30. Membership provides one volume (four issues) of *Kiva*, the Journal of Southwestern Anthropology and History, and 12 issues of the monthly newsletter *Glyphs*.

Membership applications should be sent to:

Donna Yoder, VP Membership  
Arizona Archaeological and Historical Society  
Arizona State Museum, University of Arizona  
Tucson, AZ 85721-0026 USA  
<donnayoder@cox.net>

Libraries and other institutions interested in institutional subscriptions to *Kiva* should contact the publisher, AltaMira Press, at 800.273.2233 or <www.altamirapress.com>.

### BOARD OF DIRECTORS 2010-2011

#### Officers

President: Don Burgess, 520.299.4099 <dbkuat@aol.com>  
Vice President for Activities: Katherine Cerino, 520.721.1012  
<kcerino@gmail.com>  
Vice President for Membership: Donna Yoder <donnayoder@cox.net>  
Recording Secretary: Tineke Van Zandt, 520.206.6905  
<vintzandt@dakotacom.net>  
Corresponding Secretary: Sharon Urban, 520.795.3197 <shurban@heg-inc.com>  
Treasurer: George Harding <actuary100@yahoo.com>  
Assistant Treasurer: Donna Yoder <donnayoder@cox.net>

#### Directors

Jesse Ballenger	Chance Copperstone	Billy Graves	Todd Pitezel
Michael Boley	Tom Euler	Scott O'Mack	Michael Riley
Alex Cook	Bill Gillespie	Matt Pailles	Donna Yoder

#### Editors of Society Publications

*Kiva*: Steve Lekson, Acquisitions Editor <lekson@colorado.edu>  
*Glyphs*: Emilee Mead, 520.881.2244 <emilee@desert.com>



Arizona Archaeological and Historical Society  
Arizona State Museum  
University of Arizona  
Tucson, Arizona 85721-0026  
USA

RETURN SERVICE REQUESTED

The objectives of the Arizona Archaeological and Historical Society are to encourage scholarly pursuits in areas of history and anthropology of the southwestern United States and northern Mexico; to encourage the preservation of archaeological and historical sites; to encourage the scientific and legal gathering of cultural information and materials; to publish the results of archaeological, historical, and ethnographic investigations; to aid in the functions and programs of the Arizona State Museum, University of Arizona; and to provide educational opportunities through lectures, field trips, and other activities. See inside back cover for information about the Society's programs and membership and subscription requirements.

NONPROFIT  
ORGANIZATION

U.S. Postage  
PAID

Tucson, Arizona  
Permit No. 1161