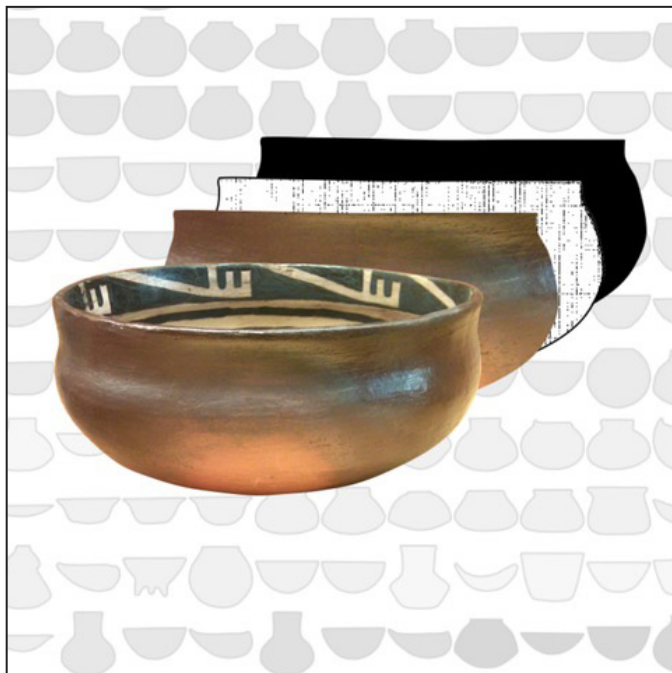


# glyphs

The Monthly Newsletter of the  
Arizona Archaeological and Historical Society

Vol. 73, No. 3

September 2022



*Cliff Polychrome replica vessel made by the presenter, displayed against vessel profile images from Las Colinas and Pueblo Grande.*

## **Next General Meeting:**

**September 19, 2022**

**7:00 pm (MST)**

**AAHS@Home (Zoom webinar)**

[www.az-arch-and-hist.org](http://www.az-arch-and-hist.org)

## **In This Issue**

- 2 President's Message
- 4 *Re-viewing the Dishes: Considering the Place of Salado Polychrome Ceramics in the Phoenix Basin,*  
Caitlin A. Wichlacz
- 12 Cornerstone

## President's Message

by Rebecca Renteria

Greetings AAHS members,

This month's President's Message will continue our introduction to the AAHS Board of Directors. We are very fortunate to have retained former members who guide us and keep us on track with their significant knowledge of the organization, while adding new members with different experiences who enrich ongoing work and who contribute new ideas to the Board in the everchanging climate of archaeology and history in the North American Southwest and Northern Mexico. Here are brief biographies of our Board. Stay tuned for more detailed biographies of our newest members!

- ♦ **Samuel Fayuant** is a Cultural Affairs Specialist for the Tohono O'odham Cultural Preservation Office.
- ♦ **Maxwell Forton** is a Ph.D. candidate at Binghamton University, currently serving as an archaeologist at Coronado National Forest, with previous work at Petrified Forest National Park and Navajo National Monument, and as a field school instructor for Archaeology Southwest.
- ♦ **Bill Gillespie** is a retired archaeologist with the Coronado National Forest.
- ♦ **Rebecca Harkness** is a Ph.D. student in the University of Arizona's School of Anthropology.
- ♦ **Sharlot Hart** is an Archeologist with the National Park Service's Southern Arizona Office.
- ♦ **Alycia Hayes** is a NHPA Specialist at Grand Canyon National Park with the Planning, Environment, and Projects division. She formally served as the Park Archeologist and Program Manager for Resource Stewardship and Facilities Management at Casa Grande Ruins National Monument.
- ♦ **Deil Lundin** is an Associate Vice President and Cultural Resources Group Manager for AZTEC Engineering.

- ♦ ***Fran Maiuri*** is the Area Coordinator for the Arizona Site Steward Program.
- ♦ ***Barbara Montgomery*** is a Senior Principal Investigator and archaeological Project Manager for Tierra Right of Way Services.
- ♦ ***Daniel Montoya*** is a Laboratory Specialist at the Pima Community College Centre for Archaeological Field Training and a GIS analyst for MCA Consulting.
- ♦ ***Savanna Moore*** is a cultural resources management professional with AZTEC Engineering and is currently a graduate student at the University of Leicester pursuing a Master of Arts in Archaeology and Heritage.
- ♦ ***Stacy Ryan*** currently serves as the Assistant Repatriation Coordinator at the Arizona State Museum. She has a background in preservation archaeology, field and laboratory work, and lithic analysis.
- ♦ ***Ric Shorrock*** is a professional photographer and long-time Arizona Site Steward.
- ♦ ***Martin Welker*** is an Assistant Curator of Zooarchaeology and Manager of the Stanley J. Olsen Laboratory of Zooarchaeology at the Arizona State Museum, as well as an Assistant Professor in the University of Arizona's School of Anthropology.

While we have a dedicated and knowledgeable group of people from diverse academic and professional backgrounds serving on this year's Board, we acknowledge these experiences do not cover the breadth of awareness necessary to address the issues important to varied communities in which we work. As always, I hope you might reach out to the Board or to me personally (rrenteri@arizona.edu) with approaches and topics you would like us to assume in our service to the community.

We are grateful to you, our AAHS members and supporters, who sustain the work we do. Through increased dialogue, we hope you will feel comfortable and invited to bring your perspectives to the conversation about where you would like to see our work headed! On this note, I wish you a beautiful year marked by these desert summer rains that will also serve to sustain all who depend on it.

## September 19: Topic of the General Meeting

### *Re-viewing the Dishes: Considering the Place of Salado Polychrome Ceramics in the Phoenix Basin*

Caitlin A. Wichlacz

How were Salado polychrome (Roosevelt Red Ware) ceramics incorporated into Phoenix Basin Hohokam ceramic assemblages during the late Classic period? Understanding the roles and relations of Salado pottery within local assemblages is important to building a more complete understanding of the social and material meanings of engagement with Salado ideas, objects, and practices. As simple as the idea may seem, situating Salado pottery in assemblage contexts is quite challenging, for a variety of surprising and illuminating reasons. In this presentation, I present a portion of my current research about vessel form analysis and explore what we can learn about archaeological research and the archaeological record by carefully examining both the data and challenges along the way.

*Speaker Caitlin A. Wichlacz is interested in how traditions of archaeological thought and practice shape the knowledge that archaeologists construct about the past. Her research focuses primarily on ceramic materials in the American Southwest, most often through collections-based research, technological and archaeometric analytical methods, and experimental replication of pottery. Caitlin is currently a doctoral candidate at Arizona State University and is completing a dissertation examining Salado polychrome ceramics in the Phoenix Basin of Arizona.*

#### **Suggested Reading:**

Archaeology Southwest

2012 A Complicated Pattern. *Archaeology Southwest Magazine* 26(3–4).

2017 Phoenix Underground. *Archaeology Southwest Magazine* 31(2–3). [See especially, pp. 37–42, “Room for Debate: Salado in Phoenix.”]

Crown, Patricia L.

1994 *Ceramics and Ideology: Salado Polychrome Pottery*. University of New Mexico Press, Albuquerque.

## AAHS Lecture Series

- Sept. 19, 2022: Caitlin Wichlacz, *Re-viewing the Dishes: Considering the Place of Salado Polychrome Ceramics in the Phoenix Basin*
- Oct. 17, 2022: Ed Jolie, *Chacoan Perishable Technologies in Regional Perspective*
- Nov. 21, 2022: Nancy Parezo, *Arizona's and New Mexico's Hidden Scholars: Husband and Wife Archaeological Teams*
- Dec. 19, 2022: Maxwell Forton, *High Places in the Painted Desert: Exploring Salient Spaces at Petrified Forest National Park*



## AAHS USED BOOK SALE! October 21–22, 2022

Our annual fall used book sale will be held in the lobby of the Arizona State Museum, Friday, October 21 from 10:00 am to 5:00 pm and Saturday, October 22 from 10:00 am to 3:00 pm. Ninety percent of the proceeds go to support the Arizona State Museum.

All books are half-price on Saturday from 12:00 to 3:00 pm!

We have received a huge number of archaeology books from the estate of David Wilcox. So, come browse and stock up. It is a great time to find “gray” literature not otherwise commonly available. We also have plenty of books in other genres – history, biography, Native American culture, and Mexican and Meso-American anthropology and culture. Many books are priced at \$2.00.

We can always use more hands to help set up and tear down. If you can do either, please contact Katherine Cerino at [kcerino@gmail.com](mailto:kcerino@gmail.com).

*glyphs*: Information and articles to be included in *glyphs* must be received by the first of each month for inclusion in the next month's issue. Contact me, Emilee Mead, at [emilee@desert.com](mailto:emilee@desert.com).

## UPCOMING AAHS FIELD TRIPS

*AAHS is in the process of planning field trips for the 2022–2023 year.*

*Most will be in-person, but in October, we are offering a virtual field trip to an area very difficult to visit in person. Join us for our September in-person field trip and an October virtual field trip.*

*A schedule of future field trips will be available soon.*

### **Chaco: From the Outside In**

**Saturday–Sunday, September 17–18, 2022; 2:00 pm**



*Casamero*

The trip will begin mid-morning on Saturday with a visit to Casamero Ruin and the Dittert site, two Chacoan Outliers located near Grants, New Mexico (about a 7-hour drive from Tucson). Although far smaller than the Great Houses of Chaco Canyon, these two sites illustrate the architectural characteristics and settlement

patterns that link more than 120 prehistoric communities across the Colorado Plateau to the famed regional center known today as Chaco Canyon. On Sunday, we will travel to Chaco Canyon itself and view Pueblo Bonito and Casa Rinconada, two of the most important ancestral Puebloan sites on the entire Colorado Plateau between AD 1000 and 1150. Afterwards, participants will be free to hike (NPS Back Country Permit required), visit other major ruins in Chaco Canyon, or begin the return trip to Arizona.

The trip will be led by retired BLM archaeologist John Roney, who participated in early work defining the extent of the Chaco World and documenting prehistoric Chacoan roadways.

The trip is limited to 20 people, and you must be an AAHS member to participate. To sign up, email Maxwell Forton at [mforton1@binghamton.edu](mailto:mforton1@binghamton.edu). Access to all sites is easy, with only Dittert site involving a short hike.

## Virtual Field Trip: The Great Cave Murals of Baja California

October 1, 2022; 11:00 am–12:30 pm

Brought to you through AAHS@Home and Zoom

Join this virtual trip into the Sierras of Baja California in some of the most forbidding terrain, where there are thousands of brilliantly painted images and deeply etched petroglyphs that have survived for centuries in remote caves and shelters. Designated a UNESCO World Heritage Site in 1993, there are more than 80 caves with layers of pictographs and numerous petroglyphs – many off limits to tourists or too difficult to reach. This virtual field trip follows the tour leader's March 2022 participation in a rigorous mule trip into these canyons and arroyos to see a small fraction of the ancient images. Guided by local *vaqueros*, riding mules, and accompanied by 12 burros who carried the gear, the group stayed near ranchos in three canyons where local Californios live in some of the most remote locations.



*Larger than life black and red pictographs like this are found in caves and alcoves throughout the Sierra de San Francisco Mountains in Baja.*

This presentation will highlight portions of this incredible 20+ kilometer trip with a total elevation gain and loss of 10,000 feet to see amazing pictographs the Mexican archaeological bureau, INAH, dates to be more than 10,000 year old. In addition, you will learn about some of the ranch families who still live near the caves and how they survive in this challenging environment. Most people will not be able to visit these caves to see these amazing images, so this virtual field trip will give you the opportunity to see pictographs that are larger than life and that include whales, turtles, manta rays, fish, eagles, deer, bighorns and giant people, more than 7–8 feet tall painted on cave ceilings and walls.

The trip will be led by Kirk Astroth, a registered professional archaeologist and graduate of the University of Arizona with a concentration on rock imagery. This trip is free and open to the public but you must pre-register at: <https://bit.ly/FieldTripGreatMurals>.



## AAHS SUBVENTION AWARD PROGRAM

The Arizona Archaeological and Historical Society (AAHS) is pleased to announce the 2022 competitive subvention award program for AAHS members. The purpose of this program is to provide money in support of the first publication of digital or print books or *Kiva* journal articles that further AAHS's mission. Many sources of grant funding do not support publication costs. Through this program, AAHS can provide occasional funding to prevent this barrier to the sharing of research results. This year, awards up to \$5,000 will be considered.

Award criteria:

- ♦ The AAHS Publications Committee will review applications submitted by authors or editors. Applications are eligible for review after the manuscript has been accepted for publication by a press or the journal editor "as is" or "with revisions."
- ♦ The application will include a cover letter that describes the purpose of the subvention, the audience for the book or article, how publication of the manuscript is in keeping with the AAHS's mission, and the availability of other sources of funding for publication. AAHS does not pay for the costs of indexing. Supporting materials shall include: (1) an abstract for the book or article; (2) a copy of the Table of Contents (if relevant); and (3) a copy of the letter from the press or journal editor indicating their terms for accepting the manuscript. Incomplete applications will not be considered.
- ♦ The monetary award will not be paid until AAHS has been notified that the book or article has been finally accepted by the press or journal editor and will be paid directly to the publisher.
- ♦ The financial support of AAHS will be noted in the volume/article acknowledgments and on the copyright page of book publications.

The deadline for receipt of submissions is **September 19, 2022** for consideration by the end of October.

One or multiple awards may be made depending on the pool of eligible applicants. To join AAHS, please visit: <http://www.az-arch-and-hist.org/home-page-members-text/membership/>. Applications should be emailed to Sarah Herr at [sherr@desert.com](mailto:sherr@desert.com).



## FUNDING OPPORTUNITY

### MARTIN-ORRELL RESEARCH GRANT

Each year AAHS awards a single grant of \$5,000 to a high-quality archaeological or historical research project that focuses on significant questions in the archaeology of the Southwestern United States or Northwest Mexico. This grant is made possible through the generosity of two AAHS benefactors: Carryl B. Martin and F. Lewis Orrell Jr.

Electronic applications are accepted from **November 1 to November 30, 2022**. Applicants must be AAHS members. For more information about the award and the application form, please visit <https://www.az-arch-and-hist.org/grants/carryl-b-martin-research-award/>.

### THE CIBECUE PROJECT

The Cibecue Apache provided valuable support during the 30 years of the Grasshopper Field School. Having been severely impacted by the viral pandemic, they would now benefit by assistance from the University of Arizona Department of Anthropology and the Arizona State Museum community through donations of items normally given to Goodwill, especially clothing and small household items. To make a donation, contact me at [jreid@arizona.edu](mailto:jreid@arizona.edu). Thank you.

### Old Pueblo Archaeology Educational Programs

Old Pueblo Archaeology Center offers speakers to give presentations on various topics for educators and other adults, as well as for children, upon demand. Examples of topics include: Teaching the Fundamentals of Archaeology, The Study of Chipped Stone Tools, The Study of Prehistoric Ceramics, The Peoples of Ancient Arizona.

To schedule a speaker on these or other Southwestern archaeology, history, and culture topics your organization might like to hear about, contact Old Pueblo Archaeology Center at 520.798.1201.

## CALL FOR SUBMISSIONS

**D**o you have a paper in preparation or on the back burner? The editors of our AAHS journal *Kiva* are putting out a call to encourage submissions. Ranked in the top quartile of anthropology journals, with a typical review decision of about a month and a half,

and articles appearing online about a month after acceptance, we hope you will consider *Kiva* as a venue for your work. Produced since 1935, *Kiva* is the premier professional journal devoted to the anthropology of the Greater Southwest. The journal's coverage is broad, geographically aimed at the greater U.S. Southwest and Mexican Northwest and intended for professional and well-informed lay audiences.

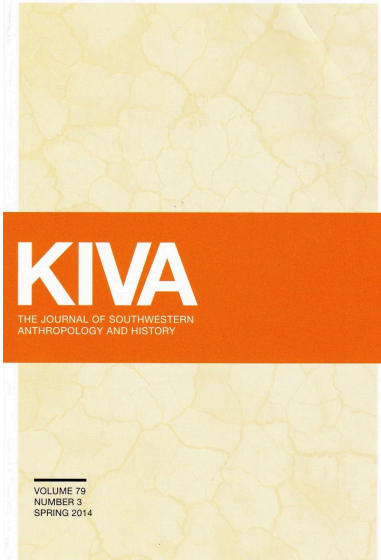
Because our articles range over a broad span of anthropological and historical topics (a range including subjects such as Paleoindian subsistence strategies to Archaic period agricultural origins to dendrochronological analysis of an early twentieth century homestead to

late twentieth century Native American boarding school life... and everything in between), we encourage you to consider submitting your work.

*Kiva* also publishes guest edited thematic issues (typically around five articles) approximately once a year, so potential organizers/guest editors are also encouraged to contact us.

If you are interested in submitting a proposal for a thematic issue or have questions, please contact either or both of the two journal co-editors: Thomas R. Rocek, rocek@udel.edu or Alison E. Rautman, rautman@msu.edu.

If you are interested in submitting a manuscript, please visit <https://www.tandfonline.com/action/authorSubmission?show=instructions&journalCode=ykiv20>.



## Student Corner

*Rebecca Harkness*  
*University of Arizona*

**H**ello and welcome to the **Student Corner** and the start of the Fall 2022 semester! I am very excited to start this column back up. First, a quick introduction. My name is Rebecca Harkness, and I was voted into the Student Representative position this last election cycle. I am an archaeological “child of Arizona,” having attended Arizona State University, Northern Arizona University, and now the University of Arizona. I am starting my fourth year in the School of Anthropology’s Ph.D. program.

The goal of this corner is to help bridge the activities in the student world and the broader archaeological communities in Arizona. Specifically, this corner will work toward disseminating relevant information to students about opportunities for scholarships, research, and awards. It will also work toward keeping AAHS members current on School of Anthropology calendar items open to the public (for example, dissertation defenses) and will summarize some current projects being conducted in the school.

On this note, if anyone has any items they would like to have noted or featured in this corner, please reach out to me at [rjharkness@arizona.edu](mailto:rjharkness@arizona.edu).

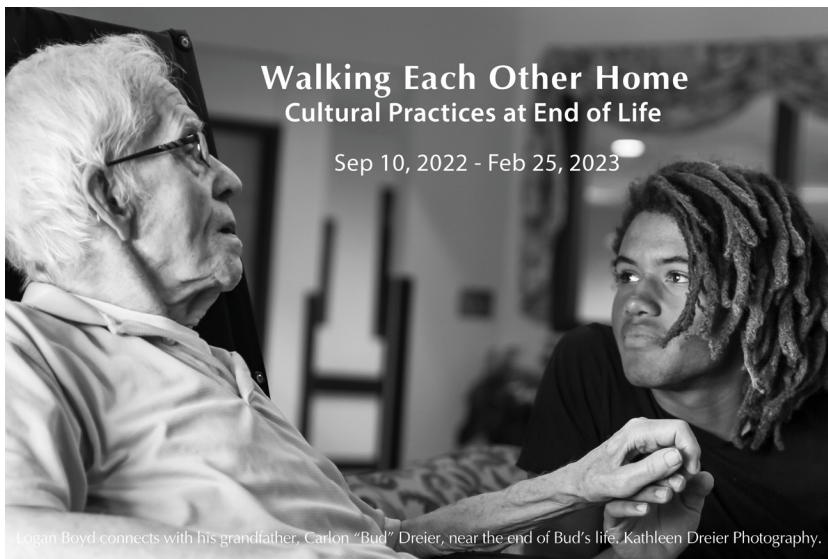
### AAHS LOGO T-SHIRTS AVAILABLE ONLINE!

Need something to lounge around the house in? AAHS T-shirts are available in our online store: <https://www.az-arch-and-hist.org/shop/>. Regular cut in gray with black logo or beige with brown logo. Also available in a women’s cut in red with white logo. The shirts are \$20 each, including postage.



## Cornerstone

*Darlene Lizarraga, Director of Marketing  
Arizona State Museum*



### **Walking Each Other Home** Cultural Practices at End of Life

Sep 10, 2022 - Feb 25, 2023

Logan Boyd connects with his grandfather, Carlton "Bud" Dreier, near the end of Bud's life. Kathleen Dreier Photography.

A new in-house exhibit presented in  
partnership with Southwest Folklife Alliance.



THE UNIVERSITY OF ARIZONA

**ARIZONA  
STATE MUSEUM**



**SOUTHWEST  
FOLKLIFE ALLIANCE**  
an affiliate of the University of Arizona



The David and Lura  
Lovell Foundation



Arizona **END OF LIFE  
CARE PARTNERSHIP**  
Accelerated as United Way of Tucson and Southern Arizona

## AAHS Membership Application

Membership is open to anyone interested in the prehistory and history of Arizona and the Southwest and who support the aims of the Society. Membership runs for a full year from the date of receipt, and covers all individuals living in the same household. If you are joining as a household, please list all members of the household. Monthly meetings are free and open to the public. Society field trips require membership.

### Membership Categories

- ☐ \$60      **Kiva members** receive four issues of the Society's quarterly journal *Kiva* and 12 issues of *Glyphs*
- ☐ \$45      **Glyphs members** receive *Glyphs*
- ☐ \$35      **Student Kiva members** receive both *Kiva* and *Glyphs*
- ☐ \$100      **Contributing members** receive *Kiva*, *Glyphs*, and all current benefits
- ☐ \$150      **Supporting members** receive *Kiva*, *Glyphs*, and all current benefits
- ☐ \$300      **Sponsoring members** receive *Kiva*, *Glyphs*, and all current benefits
- ☐ \$1,500      **Lifetime members** receive *Kiva*, *Glyphs*, and all current benefits

*Note: For memberships outside the U.S., please add \$20. AAHS does not release membership information to other organizations.*

I wish to receive *Glyphs* by (circle your choice):      Email      Mail      Both

I am interested in volunteering in AAHS activities:      Yes      Not at this time

### Institutional Subscriptions

University libraries, public libraries, museums, and other institutions that wish to subscribe to *Kiva* must do so through the publisher, Taylor & Francis at tandfonline.com. For institutional subscriptions to *Glyphs* (\$100), contact AAHS VP for Membership at the address below.

You can join online at [www.az-arch-and-hist.org](http://www.az-arch-and-hist.org), or by mailing the form below to:

Deil Lundin, VP Membership  
Arizona Archaeological and Historical Society  
Arizona State Museum, The University of Arizona  
Tucson, AZ 85721-0026

Name: \_\_\_\_\_ Phone : \_\_\_\_\_

Address: \_\_\_\_\_

City: \_\_\_\_\_ State: \_\_\_\_\_ Zip: \_\_\_\_\_

E-mail: \_\_\_\_\_

#### Officers

President: Rebecca Renteria | [rrenteri@email.arizona.edu](mailto:rrenteri@email.arizona.edu)  
Co-Vice Presidents for Activities: Fran Maiuri | [f.maiuri@gmail.com](mailto:f.maiuri@gmail.com)  
Maxwell Forton | [mforton1@binghamton.edu](mailto:mforton1@binghamton.edu)  
Vice President for Membership: Deil Lundin | [dlundin@aztec.us](mailto:dlundin@aztec.us)  
Recording Secretary: Barbara Montgomery | [bmontgomery@tierra-row.com](mailto:bmontgomery@tierra-row.com)  
Communications Officer: Savanna Moore | [savannamoore114@gmail.com](mailto:savannamoore114@gmail.com)  
Treasurer: Bill Gillespie | [wbgillespie@gmail.com](mailto:wbgillespie@gmail.com)

#### Directors

Samuel Fayuant  
Sharlot Hart

Alycia Hayes  
Daniel Montoya

Stacy Ryan  
Rick Shorrock

Rebecca Harkness (student representative)  
Martin Welker (ASM representative)

#### Editors of Society Publications

*Kiva*: Allison Rautman | [rautman@msu.edu](mailto:rautman@msu.edu)      Thomas Rocek | [rocek@udel.edu](mailto:rocek@udel.edu)  
*Glyphs*: Emilee Mead | [emilee@desert.com](mailto:emilee@desert.com) | 520.881.2244

### Board of Directors 2022-2023

A A H S



Est. 1916

Arizona Archaeological and Historical Society  
Arizona State Museum  
University of Arizona  
Tucson, Arizona 85721-0026  
USA

## RETURN SERVICE REQUESTED

The objectives of the Arizona Archaeological and Historical Society are to encourage scholarly pursuits in areas of history and anthropology of the southwestern United States and northern Mexico; to encourage the preservation of archaeological and historical sites; to encourage the scientific and legal gathering of cultural information and materials; to publish the results of archaeological, historical, and ethnographic investigations; to aid in the functions and programs of the Arizona State Museum, University of Arizona; and to provide educational opportunities through lectures, field trips, and other activities. See inside back cover for information about the Society's programs and membership and subscription requirements.

NONPROFIT  
ORGANIZATION

U.S. Postage  
PAID

Tucson, Arizona  
Permit No. 1161